

BATCH 1 - 1<sup>st</sup> NOV  
BATCH 2 - 3<sup>rd</sup> DEC



# MYSTIC HIMACHAL GROUP TOUR

Starts at  
INR 17999

**Delhi - Shimla - Kullu - Manali -  
Amritsar**



# Highlights



♣ Know the history behind all the places by our knowledgeable Tour Managers.

♣ Don't just travel. We have made long bus journeys entertaining with games & fun

♣ We serve Veg, Non-veg, & Jain meals in buffet system. Yes, it's unlimited & tasty!

♣ There are many surprises on the tour which we cannot reveal right now ! :P

♣ No night journey. Only day travel

♣ We carefully choose our hotels, bus vendors and local suppliers who not only gives best services but also helps us in challenging situations.

# Flight Details



Air India Express IX 1150



Day - 2

**PUNE**

–

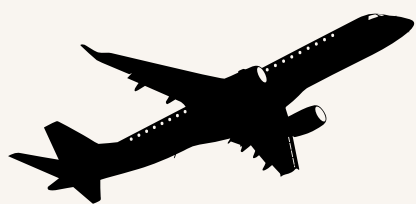
**NEW DELHI**

*12:10 pm*

*02:30am*

---

Air India Express - IX 1056



Day - 8

**NEW DELHI**

–

**PUNE**

*09:20 pm*

*11:30 pm*

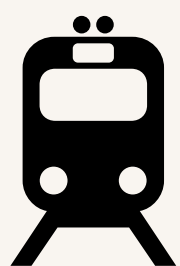
## Note:

1. The flight ticket cost is considered ₹12,000 per person; however, it may vary at the time of booking. If the price increases, you will be required to pay the difference.
2. Window seats are not included in the package. If you prefer a window seat, you may select it during web check-in at your own expense.

# Train Details



Onward Train #12493 Darshan SF Express



**PUNE  
JUNCTION**

—

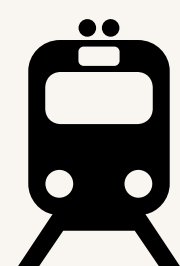
**NIZAMUDDIN  
JUNCTION**

*11:00 am*  
*(Day - 1)*

*06:47 am*  
*(Day - 2)*

---

Return Train #11058 CSMT EXP.



**AMRITSAR**

—

**KALYAN**

*08:50 am*  
*(Day - 8)*

*10:47 pm*  
*(Day - 9)*

## Note:

1. Train seats are subject to available. Hence we request you confirm the package at the earliest.
2. We don't have authority to select the seats. IRCTC allots the seat and coach. It is not assured that seats will be in one coach or nearby.
3. Pay ₹2500 per person to get an upgrade in 3AC (both ways).
4. You may also opt for air travel by paying the fare difference



# Inclusions



- ✓ Return Flight tickets from Pune in Economy class or NAC Sleeper Train Ticket
- ✓ All meals (Breakfast, lunch & dinner)
- ✓ 3-Star hotel stays
- ✓ Private bus & internal transfers
- ✓ 12-km River rafting in Kullu
- ✓ Entry tickets & permits
- ✓ DJ night & bonfire in Manali Daily
- ✓ 1L water bottle
- ✓ Goodies from Spiritual Traveller
- ✓ Professional tour managers

# Exclusions

- ✗ Meals & water during flight journey
- ✗ Lunch on snow day & Golden Temple
- ✗ Any other adventure activity
- ✗ Snow clothes with boots
- ✗ Anything which is not mentioned

## Day 2 - Delhi & Shimla



### **Start the journey from Pune**

Meet your Spiritual Traveller Tour Manager at Pune Airport 3 hours before flight time. Collect your tickets and board your flight to Delhi. On arrival, begin a scenic drive to Shimla, enjoying beautiful landscapes en route with a stop for lunch and refreshments. By afternoon, reach Shimla and explore Mall Road and. Check-in to the hotel in the evening and relax.





## Day 3 - Manali



### Shimla to Manali Scenic Drive

After breakfast, check out and begin your journey to Manali. Enjoy picturesque views en route, stopping at Pandoh Dam and Kullu Valley for sightseeing. Visit a Shawl Factory in Kullu to explore local handicrafts.

Arrive in Manali by evening, check in to the hotel, and relax. Enjoy dinner and an overnight stay in Manali.







## Manali

Let's explore the town of Manali. We can start by visiting the local goddess at the 'Hadimba Temple'. The temple was seen in the movie 'Yeh Jawaani Hai Deewani'. This pagoda-style temple is a perfect place for photography. After that, we can explore the famous 'Mall Road', which is a haven for shopping. Here, you can find everything from wooden artifacts to Tibetan flags, and from Momos to Chowmin. Don't forget to visit the Tibetan 'Buddhist Monastery' located on Mall Road, which houses a very soothing statue of Lord Buddha. We can then return to the hotel by evening. Lastly, let's have a dance party tonight! 🤪







## Snow Point with Natural Hot Water Springs

The day has arrived on which you will get to play with the snow. After breakfast at the hotel, leave for Snow Point. This can be Solang Valley, Atal Tunnel, Sissu, Nehru Kund, or Palchan, depending on Indian Army permissions. Spend around 2 hours in the snow. You may participate in snow activities at your own cost. While returning, visit 'Vashisht Kund,' known for its natural hot water spring.

Attend the game party in the evening and win exciting gifts. 🎁





# Day 6 - Kullu & Amritsar



## Adventurous Day

After breakfast, check out from the hotel and visit authentic dry fruit outlets where you can buy saffron, shilajit, and other Himalayan herbs. Experience the thrill of river rafting in the icy waters of the Beas River.

After the adventure, begin your journey towards Amritsar. Enjoy scenic landscapes and lunch en route. Arrive in Amritsar by late evening, check in to the hotel, and relax.

Enjoy dinner and an overnight stay in Amritsar.





## Attari - Wagah Border

Start the day with a visit to Jallianwala Bagh, a reminder of the 1919 massacre. Then, explore the Golden Temple, soak in its spiritual aura, and enjoy some free time for shopping.

In the afternoon, head to the Attari-Wagah Border for the energetic flag-lowering ceremony, cheering for the Indian jawans. Return to the hotel for dinner and an overnight stay in Amritsar.



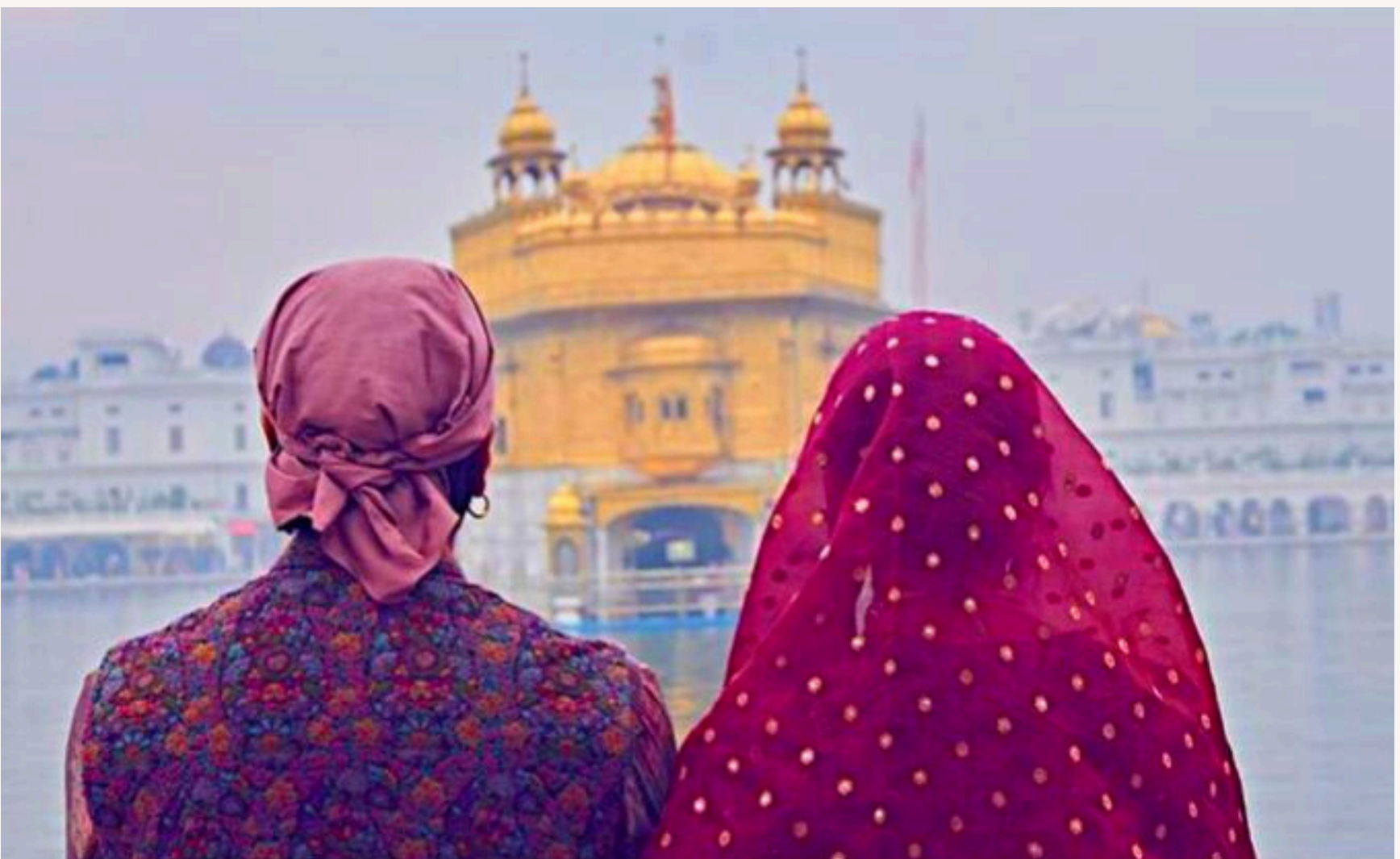


## Day 8 - Delhi



### Amritsar to Delhi – Departure Tour Ends

After breakfast, check out from the hotel and drive to Delhi. Upon arrival, proceed to the airport to catch your flight, marking the end of a memorable journey. Reach Pune by late evening. The tour ends with best memories & fun. Say goodbye to your travel companions who were on our tour with you. Let's all be in touch & plan another tour with Spritual Traveller soon. **(Note: Guests traveling by train will be dropped off at Amritsar Railway Station in time to board their scheduled train.)**





# PRICING



<b>Triple Sharing With Flight (3 Adults in a room)</b>	<b>INR 29000 Per Person</b>
<b>Double Sharing With Flight (2 Adults in a room)</b>	<b>INR 31000 Per Person</b>
<b>Triple Sharing With Train (3 Adults in a room)</b>	<b>INR 18000 Per Person</b>
<b>Double Sharing With Train (2 Adults in a room)</b>	<b>INR 20000 Per Person</b>

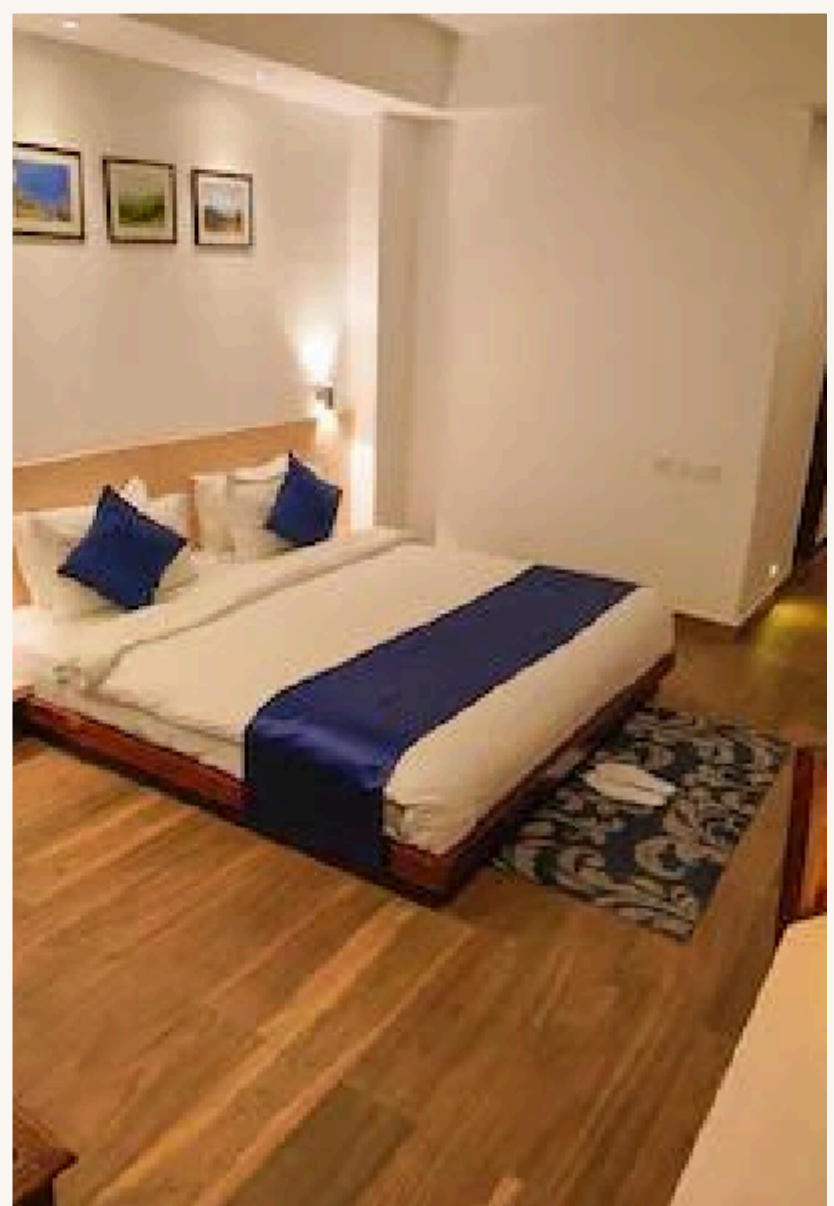
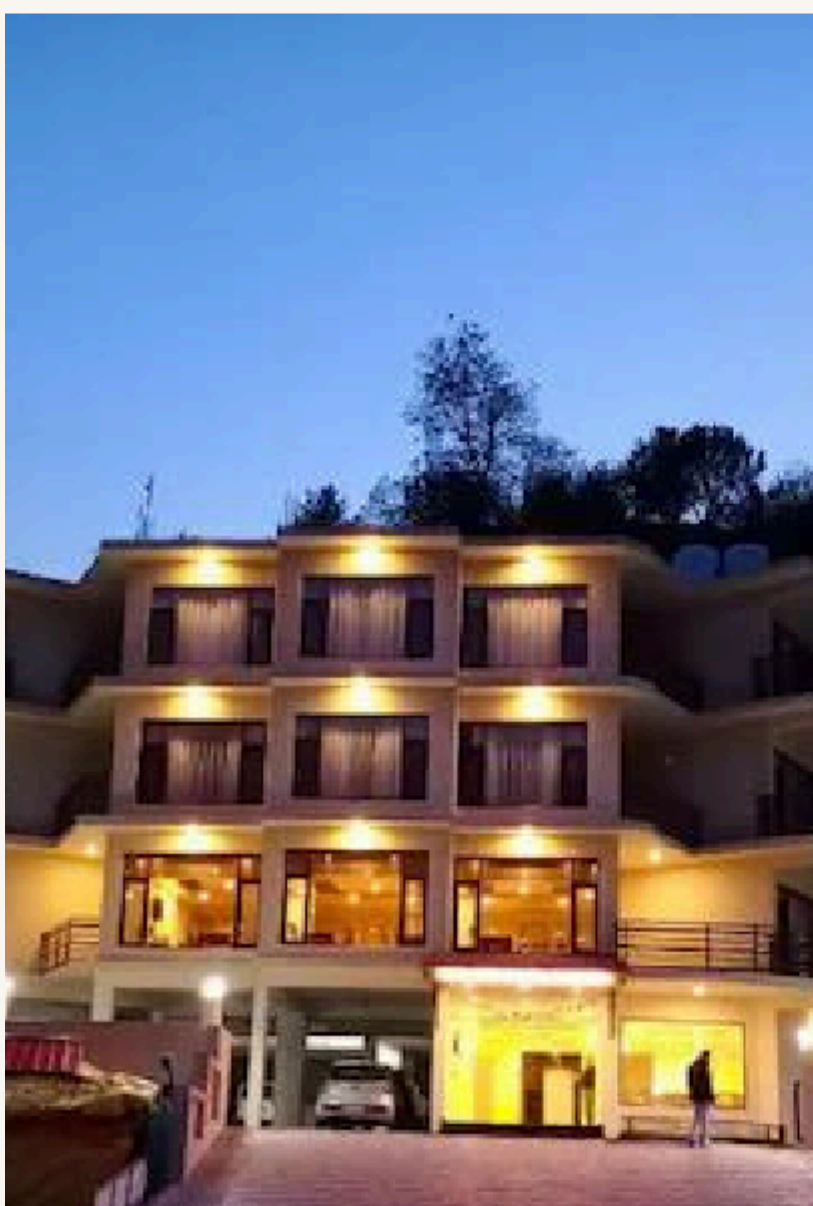
# NOTES

- 1. **Book your tour at the earliest to get the best offer on flight tickets.**
- 2. **If you prefer only the land package, deduct ₹12,000 per person from your selected package cost.**
- 3. **If any sightseeing is closed, tour manager will provide an alternative.**
- 4. **On triple / quad occupancy, hotel provides 1 queen bed & 1 extra mattress. Seperate bed will not be provided.**
- 5. **Mentioned hotels are subject to available. Or, same category hotels will be provided as an alternative.**
- 6. **We don't guarantee the amount of snow you'll get on tour as it is completely depends on nature.**

# HOTELS



**Shimla - Aangan Premium**  
**Manali- Chamunda Heavens**  
**Amritsar - Narula Aurrum**





CANCELLATION



<b>Booking Amount (Rs. 15000)</b>	<b>Non-refundable</b>
<b>If cancelled 30 days before the tour</b>	<b>50% Refund from land package</b>
<b>If cancelled within 30 days of the tour</b>	<b>No refund</b>
<b>Train / Flight</b>	<b>As per IRCTC &amp; flight rules + Service charges</b>

Bank Details:

Please Find Accounts Details

Account Name :- SPIRITUAL  
TRAVELLER

Accounts Number :-  
51970200000792

IFSC Code :- BARB0CHAPHE

MICR CODE : 411012056

ADDRESS :- CTS 4270 PLOT NO 7,  
PIMPRI CHINCHWAD LINK ROAD,  
CHINCHWAD GAON, PUNE,  
MAHARASHTRA 411033

UPI ID - spiritualtraveller21-2@okaxis



# ABOUT US



We are leading tour provider in Pimpri Chinchwad. We Provide tours all over India and also internationally. We started this company in 2021 September on very auspicious day of Ganesh Chaturthi. With a Vission of Providing affordable & relax tours. Our Mission is to give experience of freedom to our clients because travel itself is Freedom. In ancient India There is only way to become enlightened is Travel.



## Spiritual Traveller

4.8 ★★★★★ (94)

Tour operator in Pimpri-Chinchwad,  
Maharashtra · [Open](#)



@ spiritual\_traveller21



**Call or WhatsApp**  
**+91 8482852410**



[linktree.ee/spiritual\\_traveller21](https://linktree.ee/spiritual_traveller21)